

This map was created by the Jasper County Planning and Building Services and is solely intended to be used as a graphical representation. The GIS maps and data distributed by Jasper County are derived from a variety of public and private sector sources considered to be dependable, but the accuracy, completeness and currency thereof are not guaranteed. Jasper County makes no warranties, expressed or implied, as to the accuracy, completeness, currency, reliability or suitability for any particular purpose of information or data contained in or generated from the County's Geographic Information Systems database. Additionally, Jasper County, or any agent, servant or employee thereof assume no liability associated with the use of this data, and assume no responsibility to maintain it in any matter or form. It is the responsibility of the users of this data to contact the necessary public or private entity for verification of the information obtained from these maps.



Point South- Redevelopment Area **Jasper County, SC**

Aerial

Jasper County
Planning and Building Services

358 Third Avenue- Courthouse Square
P.O. Box 1659
Ridgeland, SC 29936
Phone (843) 717-3650
Fax (843) 726-7707

www.jaspercountysc.org





LOT	PROPERTY OWNER	ACRES	LOT	PROPERTY OWNER	ACRES
1	Major, Elliot, et al	14.3	29	Point South Partners	2.8
2	Gadson, William	16	30	Waffle House, Inc	0.4
3	Point South Partners	91.2	31	Point South Partners	7.4
4	South Carolina Electric & Gas	1.4	32	Jasper County	2
5	Group South Hotels, Inc	2.1	33	LOCOG	3
6	Group South Hotels, Inc.	1.8	34	MHC Oaks at Point South LLC	10
7	McDonald's Corporation	1.6	35	Point South Partners	183.32
8	CBM Realty LLC et al	1.03	36	Shree Nilkanth LLC	5.3
9	CBM Realty LLC et al	1.21	37	Olendorf, William Jr. et al Trust	10
10	Lane-O'Quinn Enterprises, LLC	0.52	38	Point South Partners	16.3
11	Hamilton, Alneatha , et al	4.27	39	Point South Partners	0.9
12	Smith, Lucy Olivia	0.37	40	BJWSA	0.63
13	Riley, Jesse & Reva Mae	0.7	41	JC Lewis Investment Co.	5.1
14	Hamilton, Alneatha, et al	0.37	42	Dixon, Merritt III Trustee	7.4
15	Strobert, Eugene	1	43	CCS Hospitality LLC	8.89
16	Hamilton, Alneatha, et al	1	44	Dobson, Harvey A & Kimberly	0.8
17	Hamilton, Raymond J. I		45	Josselson, Benjamin et al	0.44
18	Strobert, Leroy	1	46	Bartoldus, Peter	0.72
19	Hamilton, Raymond J. 0.72		47	Point South Partners	0.75
20	Hunter, Vernell	1.5	48	Country Chef LLC	1.3
21	Smith, Dwight Emerson	0.61	49	Point South Partners	1.3
22	955 Kings Highway LLC	5	50	McGraw, Roy	0.75
23	Fletcher Edwards Flowers & Paula Flowers	5	51	Crosby, Walton A	0.4
24	Point South Ventures	181.81	52	Crosby, Walton A	0.9
25	Cemetery (no deed on record)	1.2	53	Crosby, Walton A	0.74
26	Lowcountry & Resort Islands Tourist Commission	4	54	BVM Motel LLC	6.8
27	Lane Family Rentals II, LLC	2.8	55	BJWSA	0.08
28	Lane Family Rentals II, LLC	2.99	56	Point South Water & Sewer, Inc.	0.15
			57	-- (no data found)	

This map was created by the Jasper County Planning and Building Services and is solely intended to be used as a graphical representation. The GIS maps and data distributed by Jasper County are derived from a variety of public and private sector sources considered to be dependable, but the accuracy, completeness and currency thereof are not guaranteed. Jasper County makes no warranties, expressed or implied, as to the accuracy, completeness, currency, reliability or suitability for any particular purpose of information or data contained in or generated from the County's Geographic Information Systems database. Additionally, Jasper County, or any agent, servant or employee thereof assume no liability associated with the use of this data, and assume no responsibility to maintain it in any matter or form. It is the responsibility of the users of this data to contact the necessary public or private entity for verification of the information obtained from these maps.

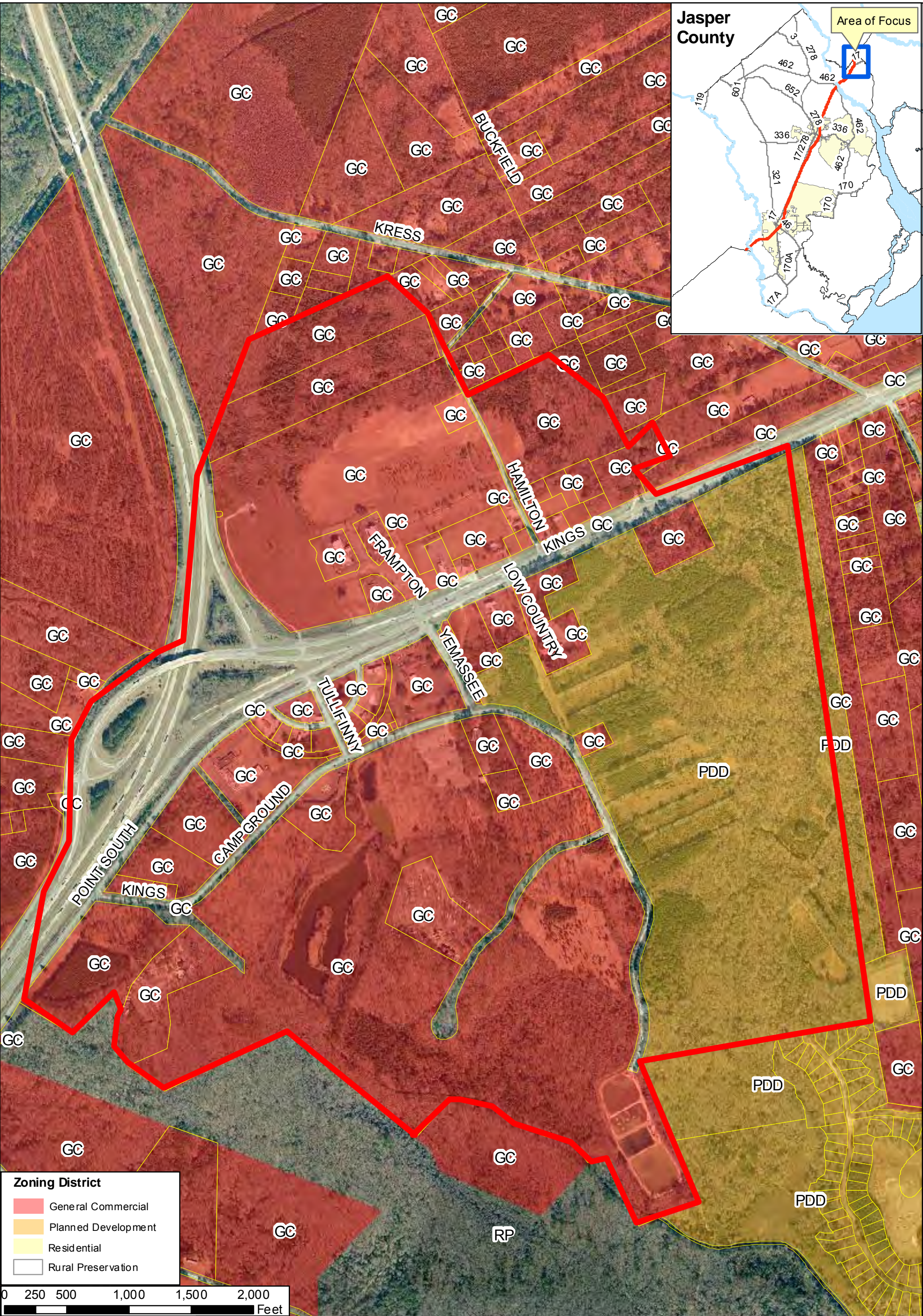
Point South- Redevelopment Area

Jasper County, SC

Ownership

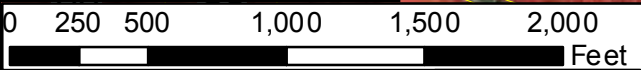
Jasper County
Planning and Building Services

358 Third Avenue- Courthouse Square
P.O. Box 1659
Ridgeland, SC 29936
Phone (843) 717-3650
Fax (843) 726-7707
www.jaspercountysc.org



Zoning District

	General Commercial
	Planned Development
	Residential
	Rural Preservation



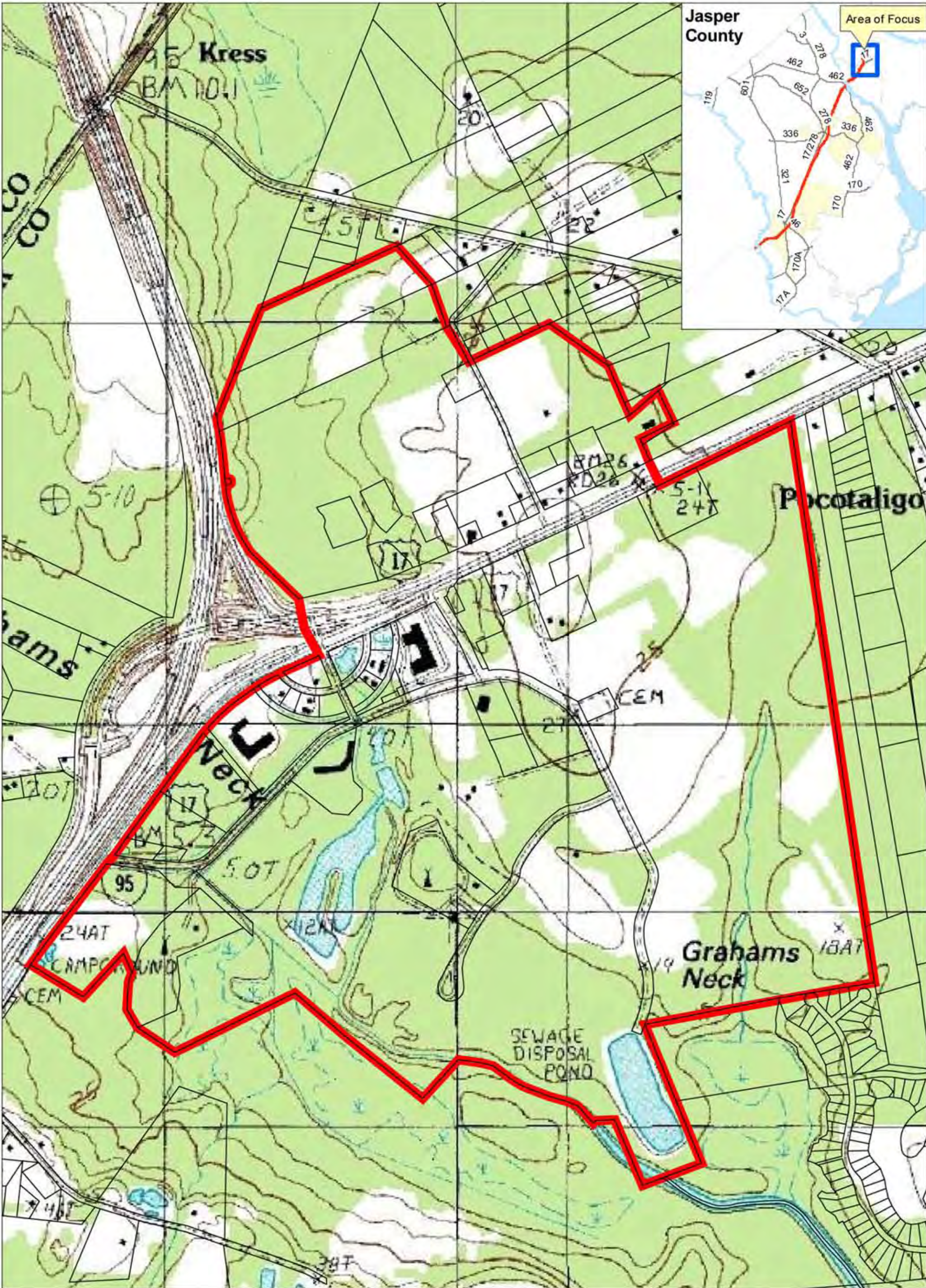
This map was created by the Jasper County Planning and Building Services and is solely intended to be used as a graphical representation. The GIS maps and data distributed by Jasper County are derived from a variety of public and private sector sources considered to be dependable, but the accuracy, completeness and currency thereof are not guaranteed. Jasper County makes no warranties, expressed or implied, as to the accuracy, completeness, currency, reliability or suitability for any particular purpose of information or data contained in or generated from the County's Geographic Information Systems database. Additionally, Jasper County, or any agent, servant or employee thereof assume no liability associated with the use of this data, and assume no responsibility to maintain it in any matter or form. It is the responsibility of the users of this data to contact the necessary public or private entity for verification of the information obtained from these maps.



Point South- Redevelopment Area
Jasper County, SC
Zoning (Unofficial)

Jasper County
Planning and Building Services
358 Third Avenue- Courthouse Square
P.O. Box 1659
Ridgeland, SC 29936
Phone (843) 717-3650
Fax (843) 726-7707
www.jaspercountysc.org

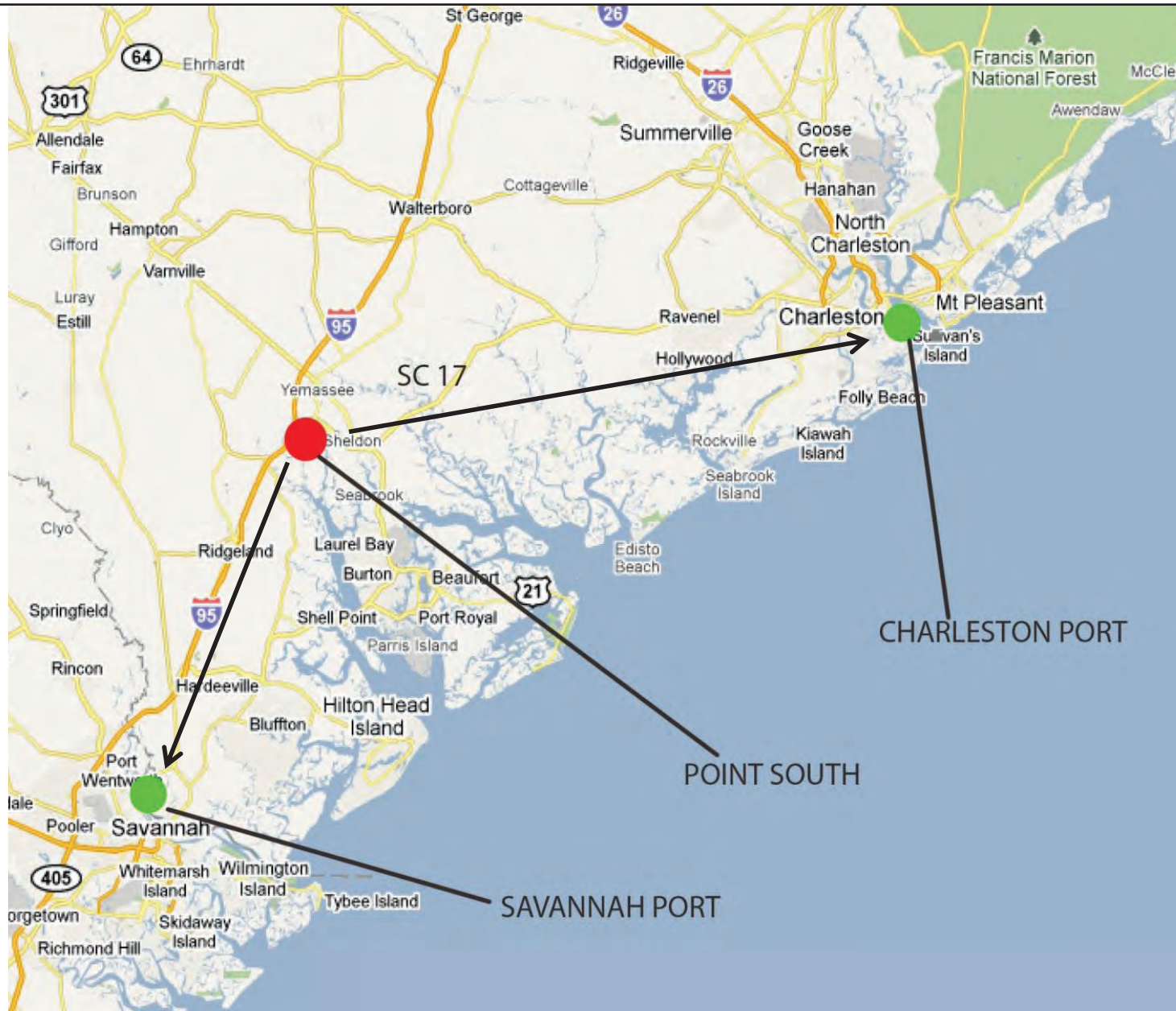




This map was created by USGS and is solely intended to be used as a graphical representation. No warranties, expressed or implied, as to the accuracy, completeness, currency, reliability or suitability for any particular purpose of information or data contained in this map. It is the responsibility of the users of this data to contact the necessary public or private entity for verification of the information obtained from this map.



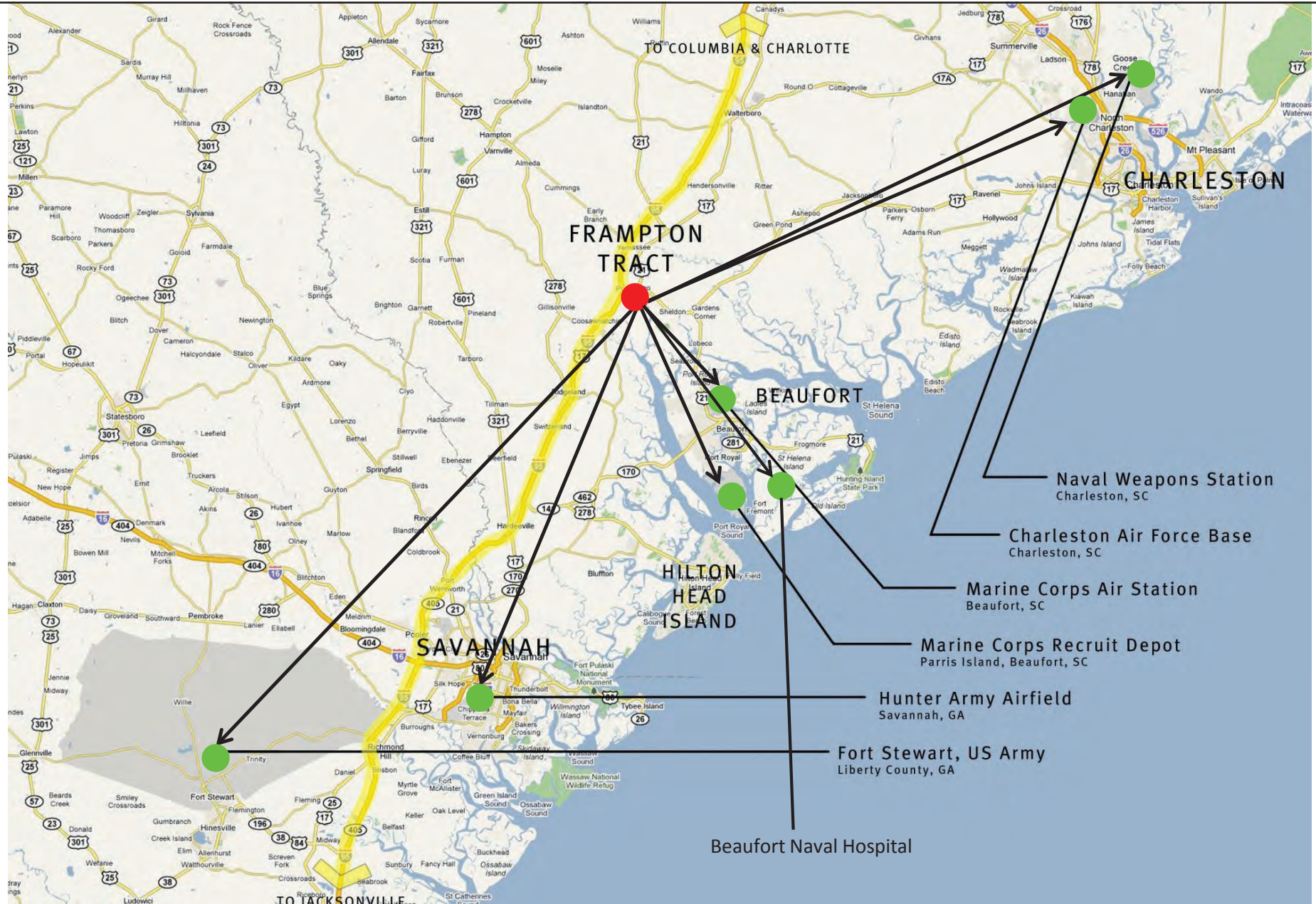
Point South- Redevelopment Area
Jasper County, SC
Topography





POINTSOUTH
SOUTH CAROLINA

Nearby Military Installations





Nearby Aerospace Anchors

